



*Shape*  
**YOUR WORLD**

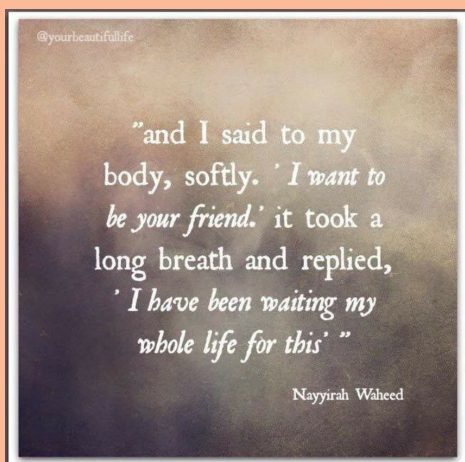
**Total Makeover**  
*challenge*  
GROW.EVOLVE.EMPOWER

# SHAPING YOUR WORLD...

16th Edition—May 4th, 2017

## In this issue:

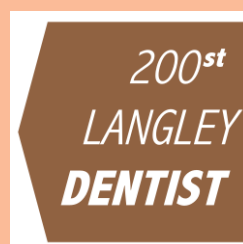
- Vote Now!
- Video—The Apprentice
- Coming Events
- Video's of the Top 6 in Langley and Abbotsford



**Vote Now for your favourite challenger! Last chance!**

[Abbotsford Challengers](#)

[Langley Challengers](#)

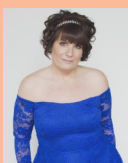


Thank you to our Diamond Sponsors for making the Total Makeover Challenge 2017 possible!

**See the amazing transformations of the Top 5 plus wildcards in Langley and Abbotsford!**

**Click on the name below to watch their video.**

[Bonnie Blanchard](#)



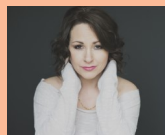
[Erin Schwaiger](#)



[Tina Toal](#)



[Tammy Floyd](#)



[Taryn Marcotte](#)



[Charlene Delmaestro](#)



[Gwen Beukens](#)



[Angie Shannon](#)



[Bonnie Todd](#)



[Jenn Halford](#)



[Shannon Waters](#)



[Carly Nesbitt](#)





This season is all about adding that "Pop" of color to your makeup collection.

From Lancôme to L'Oreal, every company is bringing you the hottest new shades for spring.

Vibrant, bold liquid liner is the hottest way to brighten your eyes in a Flash. Weather it is the sweep of violet above blue eyes, or a deep cinnamon above green...the possibilities are endless. Visit your nearest Lancôme counter to see the grandiose collection, or catch the new infallible colors from L'Oreal.

Not Sure that your hand is steady enough? Try this Pro artist tip:

Choose a handheld mirror small enough for the palm of your hand, now hold it low to your chin and look down at yourself. Hold your liquid pen on its side and Stamp color as close to your lash line as possible. Avoid dragging the liquid as this will make it skip!

Now that your eyes have a fresh new look, the best way to frame your work is with bold lashes. One luxury that we simply will not do without is the Shiseido eyelash curler. This will find every single Lash that you have and turn them up for maximum effect.

Now all you need is one or two coats of Benefit "They're Real" mascara, that mimics a lovely set of false eyelashes. Who has time for glue? And who needs it when this mascara does it all!

# UPCOMING EVENTS

Shape Your Vogue Event—May 16, 2017 at the Phoenix Lounge in Abbotsford. Ctrl Click on photo for link.



The Apprentice - Thank you to all the judges in both Langley and Abbotsford for giving so generously of your time and talents to the Apprentice challenge! (Press Ctrl and click on the image for link)



If you would like to volunteer, become a sponsor, or donate to Shape Your World Society, please see our website [www.totalmakeoverchallenge.com](http://www.totalmakeoverchallenge.com) or send an email to [info@shapeyourworldsociety.com](mailto:info@shapeyourworldsociety.com).



Copyright © \*|2017|\* \*|Shape Your World Society|\*, All rights reserved.

**Our email address is:**

[anita@shapeyourworldsociety.com](mailto:anita@shapeyourworldsociety.com)